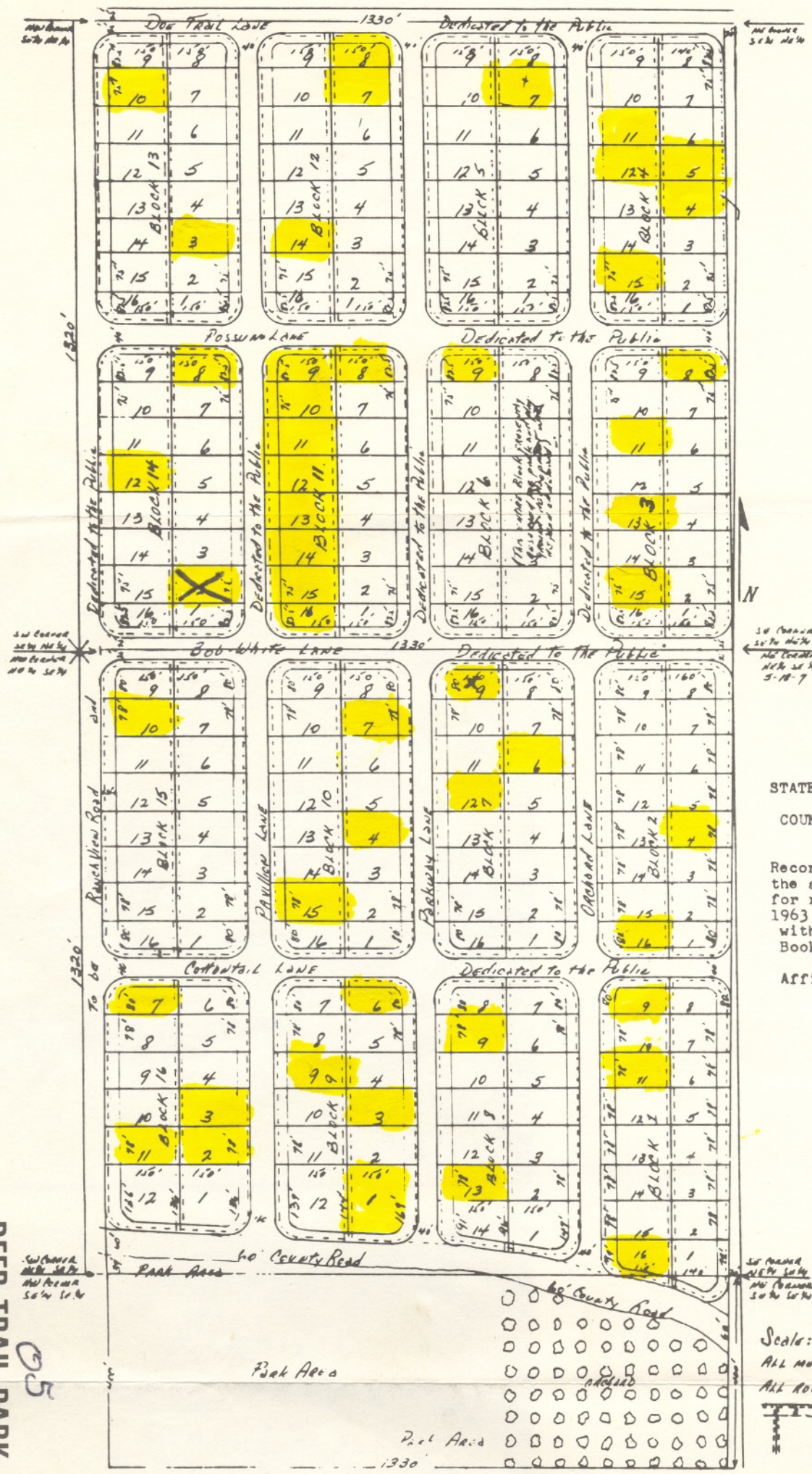


TRACT "D"

Tract D - 05



STATE OF ARKANSAS  
COUNTY OF IZARD

I, Charles Cheath  
Recorder for the County  
the annexed and forego  
for record in my office  
1963 at 4:00 o'clock P  
with the acknowledgment  
Book No. 50 page 139.  
IN WITNESS WHEREOF  
Affixed the seal of said

LEGEND

- Scale: 1 inch = 200 FEET
- ALL MEASUREMENTS GIVEN IN FEET
- ALL ROADS DEDICATED TO THE PUBLIC
- Property (or) Line
- 5' utility easement
- Building line: 30'

DEER TRAIL PARK ADDITION

This Plat Consists of: The S 1/4 of the NE 1/4, the NE 1/4 of the SE 1/4 and 400' from N to S  
of the N end of the SE 1/4 of the SE 1/4. All in section Five (5),  
Township Eighteen North (T18N), Range Seven West (R7W),  
County of Izard, State of Arkansas.